

# Maximum water savings with urinals by uridan.

uridan delivers simplicity, style, sustainability and stunning danish design.





**Waterless urinals  
since over 25 years.**

## Our Vision+

Water is precious, and flushing a urinal with potable water is a waste of this valuable resource. This is at the heart of everything we do and inspires uridan to continue to innovate, creating products with superior functionality and distinctive Danish design.

---

### Improve sustainability and save costs.

A conventional urinal can use up to 150,000 litres of valuable drinking water per year. uridan aims to conserve this precious resource for the essential things in life.

uridan will reduce your environmental footprint delivering sustainability and savings. Water savings lead to building efficiencies and cost savings. Saving an estimated 150,000 litres per urinal per year – uridan provides a simple sustainable solution.

uridan delivers simplicity, style, sustainability and stunning danish design.

**Follow us on our journey and help us to protect this precious resource “water” for our next generation.**



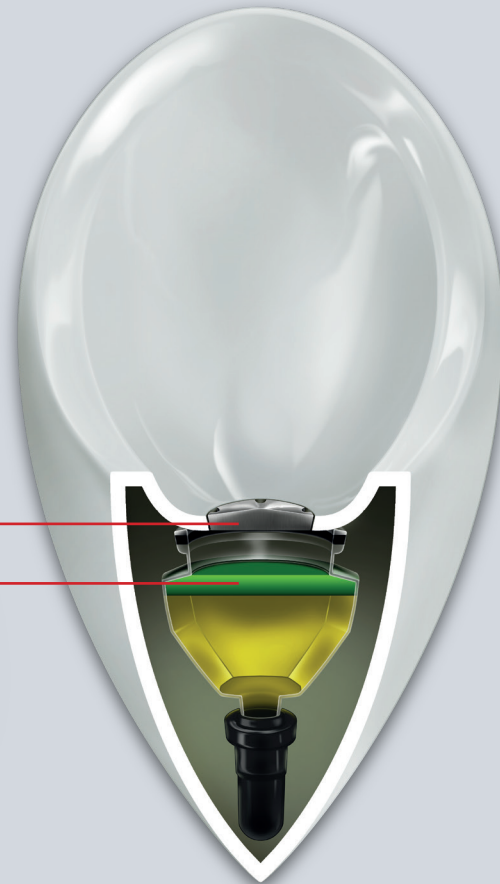
uridan  
Image Film

# Innovative and Unique+

The patented uridan-technology.



uridan  
Explainervideo



uridan's unique  
waste trap



uriLOCK – specially  
developed blocking fluid

## How it works?

Ongoing research and development have led to today's superior uridan technology and design.

The heart of the uridan urinal is the unique waste trap that works with uriLOCK, uridan's specially developed odour-blocking fluid. uriLOCK is lighter than urine, remaining on the surface of the waste trap, creating a liquid seal.

## Your benefits:

- 100% odourless thanks to the specially developed blocking fluid
- No water and electricity connection required
- Reduced installation and ongoing operating costs
- Simple maintenance due to patented technology
- No limescale deposits and urine scale formation
- Quick daily clean due to the smooth surface of the urinal



3 Years  
Warranty



## Aesthetics: A Labour of Love.

Functional and sustainable with unique Danish Design.

---

Whether you are designing a residential bathroom or a large commercial project, uridan has the solution. The uridan collection offers a range of standardised products with tailor-made solutions available to meet your unique requirements. Our products can be manufactured in any colour to match your design.

It's your choice.

# Master

designed by Troels Bøgely

## Dimensions:

740x400x405 mm  
(HxWxD, dimensions  
may vary slightly)

## Colours GRP:

- White
- Telegrey 2
- Black

plus in all  
RAL colours



- + **Material:** Glass fibre reinforced plastic (GRP)
- + **Connection:** horizontal

The Master, the newest urinal in the uridan collection, brings modern elegance. It features a slightly higher wall for added comfort and privacy. Ideal for design enthusiasts, it adds a stylish touch to bathrooms while focusing on user comfort.

# Admiral

designed by Troels Bøgely

## Dimensions:

800x410x407 mm  
(HxWxD, dimensions  
may vary slightly)

## Colours Ceramic:

- White

## Colours GRP:

- White
- Telegrey 2
- Black

plus in all  
RAL colours



- + **Material:** Ceramic or glass fibre reinforced plastic (GRP)
- + **Connection:** horizontal oder vertical

The Admiral exudes a distinct elegance. The designer's goal was to make a urinal that's not just visually appealing, but also user-friendly. Its straight-forward design, featuring smooth curves and simple shapes, makes cleaning effortless and maintenance a breeze.



# Admiral Mini

designed by Troels Bøgely

## Dimensions:

715x362x345 mm  
(HxWxD, dimensions may vary slightly)

## Colours GRP:

- White
- Telegrey 2
- Black

plus in all  
RAL colours



- + **Material:** Glass fibre reinforced plastic (GRP)
- + **Connection:** horizontal

The Admiral Mini shares the distinctive elegance of its larger counterpart, the Admiral. While mirroring the design of the Admiral, it also impresses with its more compact and smaller size. Therefore, this model is perfect for projects with limited space where design cannot be compromised.

# Cadet

designed by Troels Bøgely

## Dimensions:

530x350x340 mm  
(HxWxD, dimensions may vary slightly)

## Colours GRP:

- White
- Telegrey 2
- Black

plus in all  
RAL colours



- + **Material:** Glass fibre reinforced plastic (GRP)
- + **Connection:** horizontal oder vertical

The timeless design makes the Cadet a true classic. In addition to its classic appearance, the Cadet is extremely space-saving, making it the smallest urinal in the uridan family. It can also be positioned lower on the wall for use as a children's urinal, adding versatility to its functionality.

# Captain ♀

designed by Yu Bobek

## Dimensions:

970x380x532 mm  
(HxWxD, dimensions  
may vary slightly)

## Colours GRP:

- White
- Telegrey 2

plus in all  
RAL colours



- + **Material:** Glass fibre reinforced plastic (GRP)
- + **Connection:** vertical

The Captain frees women from long queues at concerts and events, giving them a quick solution to an age old problem. This female waterless urinal is perfectly suited for event hire toilet facilities where there is a requirement to reduce water consumption and queues to amenities. The uridan Captain is a hygienic alternative as there is no contact with the unit and no flush required to operate. Toilet tissue can be disposed of in sensor activated waste bins and privacy can be maintained by installing the units in cubicles.

with Soft-Close  
Function

# Compass ♀♂

designed by uridan

## Dimensions:

430x360x520 mm  
(HxWxD, dimensions may  
vary slightly)

## Colours GRP:

- White

plus in all  
RAL colours



- + **Material:** Glass fibre reinforced plastic (GRP)
- + **Connection:** vertical

The Compass has benefitted from a design upgrade. The new design delivers a softer curve improving both appearance and user comfort. The unit also comes with a newly improved 'soft-close' lid. The Compass has gained popularity in low-energy homes. This versatile urinal can be used by men, women and children alike. Distinguished by a simple, hygienic, unisex design, the Compass is ideal for locations with a limited water supply.

# Pylon

designed by Troels Bøgely

## Dimensions:

Maxi 940x335x412 mm

Midi 815x335x412 mm

(HxWxD, dimensions may vary slightly)

## Colours GRP:

White

Telegrey 2

Black

plus in all  
RAL colours



+ **Material:** Glass fibre reinforced plastic (GRP)

+ **Connection:** vertical

The Pylon is possibly uridan's most 'funky' design created specifically for clubs, pubs, restaurants and hotels looking for a more modern look. The simple sophisticated unit is available in two heights: Pylon Midi and Maxi. The Pylon is particularly versatile as the urinal can be installed over existing toilet plumbing, delivering further installation cost benefits.

# Crew

designed by uridan

## Dimensions:

120cm - 550x1200x322 mm

140cm - 550x1400x322 mm

180cm - 550x1800x322 mm

240cm - 550x2400x322 mm

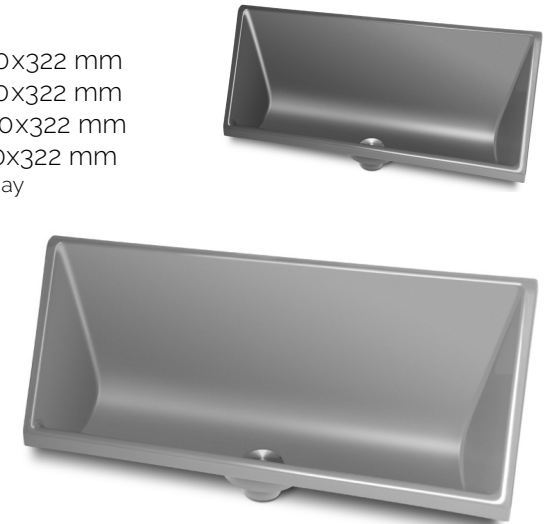
(HxWxD, dimensions may vary slightly)

## Colours GRP:

Telegrey 2

Iron Grey

plus in all  
RAL colours



+ **Material:** Glass fibre reinforced plastic (GRP)

+ **Connection:** horizontal oder vertical

This trough-urinal is ideally suited for venues catering for a large number of males. Widely used in sporting venues, entertainment centres, demountable buildings and schools, the Crew is available in four lengths: 120cm, 140cm, 180cm and 240cm. Apart from the obvious water savings, the resilient fibreglass material provides a high level of protection against vandalism.



# Spinnaker

designed by Troels Bøgely

## Dimensions:

1140x100x400 mm  
(HxWxD, dimensions may vary slightly)

## Colours GRP:

- White
- Telegrey 2
- Black

plus in all  
RAL colours



+ **Material:** Glass fibre reinforced plastic (GRP)

Originally designed to complement the design lines of the uridan Admiral, the Spinnaker privacy screen can be used alongside any uridan urinal. The urinal-screen hangs freely on the wall with no visible wall brackets. The Spinnaker is a stylish addition, providing privacy and comfort for users in commercial amenities. The Spinnaker is available in standard colours, with tailored colour solutions for specific room concepts.



- + So diverse
- + So well-designed
- + So user-friendly

uridan delivers sustainability, performance and outstanding danish design.

Frequently specified for large commercial office towers, sporting stadiums, shopping centres, schools, universities, restaurants, hotels, bars and clubs, uridan urinals combine environmental performance, operating cost benefits and great design.

In an effort to help manage water globally, the uridan collection is now available across the globe.

Let's work together to save our most precious resource.



uridan  
Installation Instructions

# The Future is Now:

The innovative, new HighTech Cover indicates when the uriLOCK refill is required.

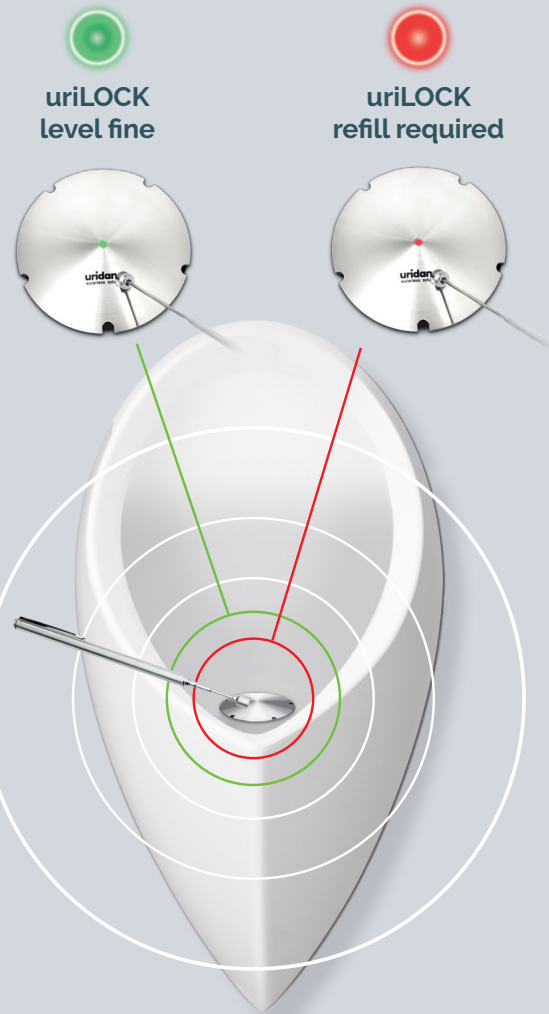


**LED light** indicates the level of the uriLOCK blocking fluid.

LED light is activated by touching the **flag of the uridan logo** with the **magnetic pen**.

**Electronics** with built-in battery.

**Electrodes** measure the **uriLOCK** level in the urinal.



uriLOCK  
level fine

uriLOCK  
refill required

Say goodbye to the unnecessary opening of the cover to check if there is enough uriLOCK blocking fluid in the urinal. The HighTech cover indicates when the uriLOCK refill is required.

How does it work? The fluid level is determined by the HighTech cover's new, intelligent, built-in technology. To monitor the fluid level, simply swipe the cover with a magnetic pen and an LED-light will indicate if there is enough uriLOCK blocking fluid in the urinal. Green indicates that the uriLOCK level is fine. Red indicates that a uriLOCK refill is required. The cover is battery operated. Battery life is up to 8 years.

# Cleaning and Maintenance. Fast, Simple & Effective.



uridan  
Cleaning Instructions

## uri**CLEAN** Cleaning+

Spray on **uriCLEAN**  
and polish with  
uriCLOTH.



## uri**LOCK** Refilling+

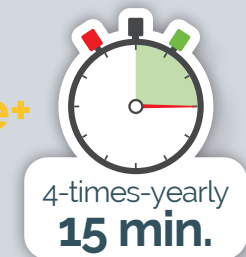
Refill 0,3l **uriLOCK**  
every 3 months.



## uri**STRONG** uri**TABS**

## Maintenance+

Rinse with  
**uriSTRONG/**  
**uriTABS** 4 times  
a year.





**uridan waterless solutions GmbH**  
Sandfeld 5, A-2100 Stetten  
[uridan.com](http://uridan.com)

**Head Office**  
+43 2262 20 900  
[order@uridan.com](mailto:order@uridan.com)

**Sales Austria**  
+43 2262 20 900 20  
[vertrieb@uridan.com](mailto:vertrieb@uridan.com)

**Sales International**  
+43 2262 20 900 30  
[a.maghsood@uridan.com](mailto:a.maghsood@uridan.com)