

Great Design.  
Sustainable Outcome.

HANDCRAFTED  
3 YEARS  
WARRANTY  
IN EUROPE



**uridan**   
waterless solutions

PATENTED URIDAN TECHNOLOGY

## Waterless Urinals for over 20 years.



Water is precious. And flushing a urinal with potable water is a waste of this valuable resource. This is at the heart of everything we do and inspires uridan to continue to innovate, creating products with superior functionality and distinctive Danish design.

---

### Sustainability and Savings

A conventional urinal can use up to 150,000 litres of valuable drinking water per year. uridan aims to conserve this precious resource for the more important things in life.

uridan will reduce your environmental footprint delivering sustainability and savings. Water savings lead to building efficiencies and cost savings. Saving an estimated 150,000 litres per urinal per year – uridan provides a simple sustainable solution.

uridan delivers simplicity, style, sustainability and stunning Danish design.





# Innovative and unique – the new uridan technology



## How it works?

Ongoing research and development have led to today's superior uridan technology and design.

The heart of the uridan urinal is the unique waste trap that works with uriLOCK, uridan's biodegradable odour blocking fluid. uriLOCK is lighter than urine, remaining on the surface of the waste trap, creating a liquid seal.

While urine flows directly into the sewer system below, uriLOCK's liquid seal prevents sewer odours from entering the room above.

## Your benefits:

- 100% odourless thanks to the specially developed blocking fluid uriLOCK
- No water and electricity connection required
- Reduced installation and ongoing operating costs
- Simple maintenance due to patented technology
- Quick daily clean due to the smooth surface of the urinal



HANDCRAFTED  
**3 YEARS**  
WARRANTY  
IN EUROPE



## Aesthetics: A Labour of Love.

Functional and sustainable with unique Danish Design.

Whether you are designing a [residential bathroom](#) or a [large commercial project](#), uridan has the solution. The uridan collection offers a range of standardised products with [tailor-made solutions](#) available to meet your unique requirements. Our products can be manufactured in any colour to match your design.

It's [your choice](#).



NEW

## Master

designed by Troels Bøgely

### Dimensions:

740x400x405 mm  
(HxWxD, dimensions may vary slightly)

### Colours GRP

- White
- Telegrey 2
- Jet Black



plus in all RAL colours

**Material:** Glass fibre reinforced plastic (GRP)

**Installation:** horizontal

The Master is the latest model in the uridan collection. This urinal is modern and elegant – designed with a slightly higher urinal wall to create added comfort and privacy for users. The Master is the perfect solution for the design conscious wishing to deliver a statement bathroom with the added benefit of user wellbeing.

## Admiral

designed by Troels Bøgely

### Dimensions:

800x410x407 mm  
(HxWxD, dimensions may vary slightly)

### Colours Ceramic:

- White

### Colours GRP

- White
- Telegrey 2
- Jet Black



plus in all RAL colours

**Material:** Ceramic or Glass fibre reinforced plastic (GRP)

**Installation:** horizontal or vertical

The Admiral has a distinctive elegance. The designer wanted to create an attractive and user-friendly urinal. The simple shape and smooth curved surfaces ensure that the urinal remains clean and simple to maintain. The Admiral is frequently specified for office buildings, restaurants, hotels, clubs, schools, and sports stadiums.

NEW

## Admiral Mini

designed by Troels Bøgely

### Dimensions:

715x362x345 mm  
(HxBxT, dimensions may vary slightly)

### Colours GRP

- White
- Telegrey 2
- Jet Black



plus in all RAL colours

**Material:** Glass fibre reinforced plastic (GRP)

**Installation:** horizontal

The Admiral Mini is simply a smaller version of uridan's top selling urinal – The uridan Admiral. The uridan Admiral is the most recognisable uridan urinal on the global market. The arrival of the Admiral Mini allows specifiers and designers to utilise this stunning urinal design in projects where space is at a premium.

## Cadet

designed by Troels Bøgely

### Dimensions:

530x350x340 mm  
(HxWxD, dimensions may vary slightly)

### Colours Ceramic:

- White

### Colours GRP

- White
- Telegrey 2
- Jet Black



plus in all RAL colours

**Material:** Ceramic or Glass fibre reinforced plastic (GRP)

**Installation:** horizontal or vertical

The timeless design of the uridan Cadet makes this a classic. The designer wanted to create a smaller, compact urinal with a simple design, curved surfaces, and user-friendly form. The ceramic model is a favourite for commercial office buildings, schools and airports; while the fibreglass model is ideal for public spaces. The Cadet can be positioned lower on the wall for use as a children's urinal.

# Captain

designed by Yu Bobek

♀ female solution

## Dimensions:

970x380x532 mm  
(HxWxD, dimensions may vary slightly)

## Colours GRP

- White
- Telegrey 2

plus in all RAL colours



**Material:** Ceramic or Glass fibre reinforced plastic (GRP)

**Installation:** vertical

The Captain frees women from long queues at concerts and events, giving them a quick solution to an age old problem. This female waterless urinal is perfectly suited for event hire toilet facilities where there is a requirement to reduce water consumption and queues to amenities. The uridan Captain is a hygienic alternative as there is no contact with the unit and no flush required to operate. Toilet tissue can be disposed of in sensor activated waste bins and privacy can be maintained by installing the units in cubicles.

# Compass

designed by Troels Bøgely

♂ unisex solution

## Dimensions:

430x360x520 mm  
(HxWxD, dimensions may vary slightly)

## Colours GRP

- White

plus in all RAL colours



**Material:** Glass fibre reinforced plastic (GRP)

**Installation:** vertical

The Compass has benefitted from a design upgrade. The new design delivers a softer curve improving both appearance and user comfort. The unit also comes with a newly improved 'soft-close' lid. The Compass has gained popularity in low-energy homes. This versatile urinal can be used by men, women and children alike. Distinguished by a simple, hygienic, unisex design, the Compass is ideal for locations with a limited water supply.

NOW ALSO IN  
140cm WIDTH  
AVAILABLE

# Pylon

designed by Troels Bøgely

## Dimensions:

Maxi 940x335x412 mm

Midi 815x335x412 mm

(HxBxT, dimensions may vary slightly)

## Colours GRP

White

Telegrey 2

Jet Black



plus in all RAL colours

**Material:** Glass fibre reinforced plastic (GRP)

**Installation:** vertical

The Pylon is possibly uridan's most 'funky' design created specifically for clubs, pubs, restaurants and hotels looking for a more modern look. The simple sophisticated unit is available in two heights: Pylon Midi and Maxi. The Pylon is particularly versatile as the urinal can be installed over existing toilet plumbing, delivering further installation cost benefits.

# Crew

designed by uridan

## Dimensions:

120cm - 550x1200x322 mm

140cm - 550x1400x322 mm

180cm - 550x1800x322 mm

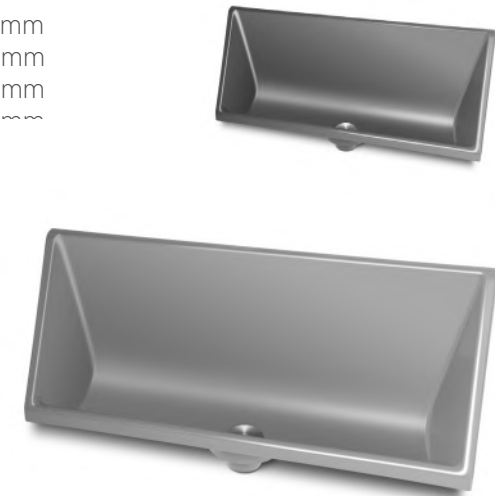
240cm - 550x2400x322 mm

(HxWxD, dimensions may vary slightly)

## Colours GRP

Telegrey 2

Iron Grey



plus in all RAL colours

**Material:** Glass fibre reinforced plastic (GRP)

**Installation:** horizontal or vertical

The uridan Crew trough urinal is ideally suited for venues catering for a large number of males. Widely used in sporting venues, entertainment centres, de-mountable buildings and schools, the Crew is available in four lengths: 120cm, 140cm, 180cm and 240cm. Apart from the obvious water savings, the resilient fibreglass material provides a high level of protection against vandalism.



# Spinnaker

designed by Troels Bøgely

## Dimensions:

1140x100x400 mm  
(HxWxD, dimensions may vary slightly)

## Colours GRP

- White
- Telegrey 2
- Jet Black

plus in all RAL colours



**Material:** Glass fibre reinforced plastic (GRP)

Originally designed to complement the design lines of the uridan Admiral, the Spinnaker privacy screen can be used alongside any uridan urinal. The Danish Design urinal screen hangs freely on the wall with no visible wall brackets. The Spinnaker is a stylish addition, providing privacy and comfort for users in commercial amenities. The Spinnaker is available in standard colours, with tailored colour solutions for specific room concepts.

A complete collection.  
Carefully researched.  
Carefully tested.



uridan delivers sustainability, performance and outstanding Danish Design.

Frequently specified for large commercial office towers, sporting stadiums, shopping centres, schools, universities, restaurants, hotels, bars and clubs, uridan urinals combine environmental performance, operating cost benefits and great design.

In an effort to help manage water globally, the uridan collection is now available across the globe.

Let's work together to save our most precious resource.





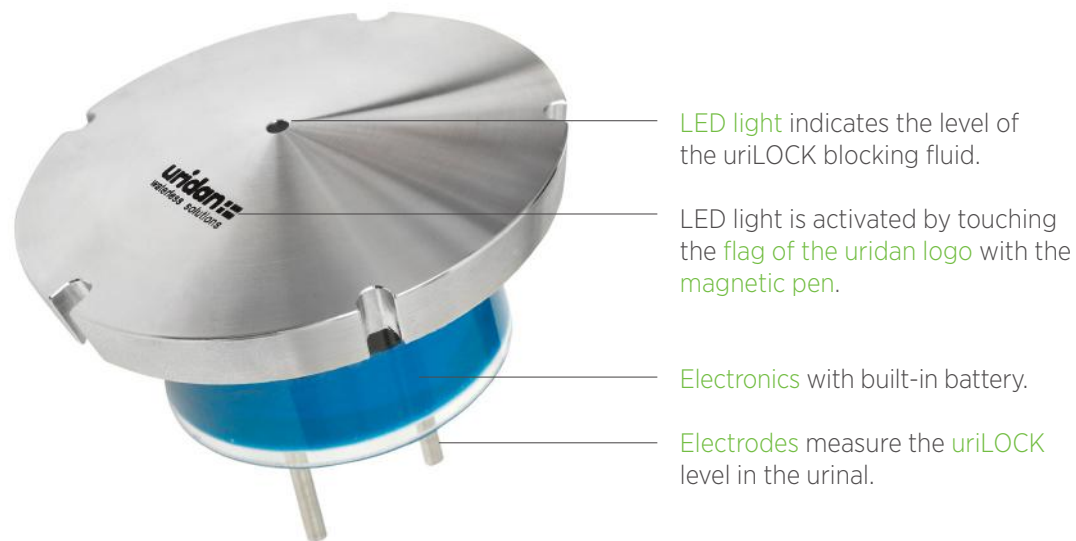
For Design Lovers:  
Introducing the new **Ceramic Cover**



Great design comes in the form of the new ceramic cover by uridan. The ceramic cover is both minimalist and practical. With the smooth surface of the cover now matching the surface of the urinal this 'all ceramic' solution delivers an added touch of elegance to the uridan collection.

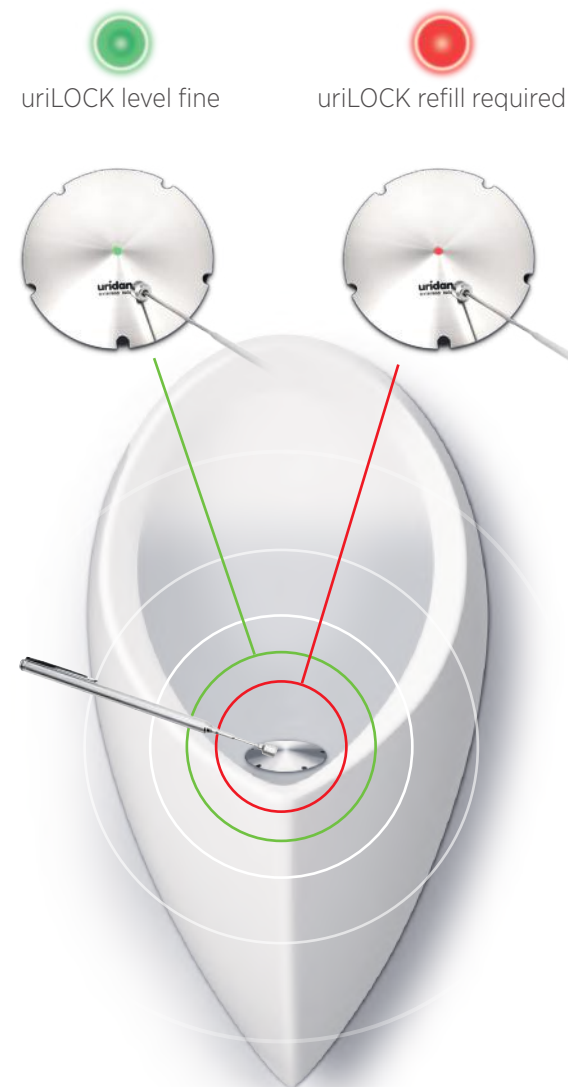
NOW SAVE UP TO  
50 % IN OPERATING  
COSTS!

The Future is Now:  
The innovative, **new HighTech Cover**  
indicates when the uriLOCK refill is required.



Say goodbye to the unnecessary opening of the cover to check if there is enough uriLOCK blocking fluid in the urinal. The **HighTech cover** indicates when the uriLOCK refill is required.

**How does it work?** The fluid level is determined by the HighTech cover's new, intelligent, built-in technology. To monitor the fluid level, simply swipe the cover with a **magnetic pen** and an **LED-light** will **indicate** if there is enough uriLOCK blocking fluid in the



urinal. **Green** indicates that the uriLOCK level is fine. **Red** indicates that a uriLOCK refill is required. The cover is battery operated. **Battery life** is up to **8 years**.



# Functional, Simple, and Fast - The uridan Hygiene System.



Daily  
Cleaning  
uri**CLEAN**  
Art.Nr. 618 728 050

uridan can be cleaned very simply with the aid of uri**CLEAN**. Simply spray the urinal surface with uri**CLEAN** and the lotus effect prevents any adhesion of urine drops, causing them to simply roll off.

1



» Spray uri**CLEAN** daily on the cover and surface of the urinal.

2



» Remove the cover and clean urinal opening and cover with a brush every 2 weeks.

3



» Polish the outer and inner surface of the urinal with the uri**CLOTH** cleaning cloth.

\* In high traffic amenities, we recommend cleaning the urinal several times a day.

# We offer simplicity. With **less costs** and **less effort**.

The cost-efficiency of the uridan urinal becomes apparent with its simple installation. uridan urinals **do not require water, complex plumbing, electrical flush mechanisms, sensors, or any associated fittings**. Just pour the **uriLOCK** blocking fluid over the cover and the urinal is immediately ready for operation.



Refilling  
**uriLOCK**

Art.Nr. 618 729 030

Our especially developed biodegradable blocking fluid **uriLOCK** ensures that your uridan urinal remains completely odourless, operating without the need for costly sealants or chemical additives.



» Pour **uriLOCK** blocking fluid directly over the cover.

\* Refill according to frequency of use (every 1-3 months).

# Say Goodbye to heavy and persistent dirt and deposits!



Deep  
Cleaner  
uri**STRONG**  
Art.Nr. 618 730 030

uri**STRONG** deep cleaner is ideal for heavy and persistent dirt and deposits in sanitary areas. uri**STRONG** also removes lime and urine scale. The recommended application is 3 to 6 times per year.

1



» Lift cover with suction device.

2



» Pour 100 ml of uri**STRONG** directly into urinal.  
» Leave for 5 to 15 minutes. (depending on requirements)

3



» Flush with 5 litres of warm water to ensure waste trap clears.

4



» Clean urinal opening and the inside of the waste trap with a brush.  
» Flush again. Slowly refill waste trap with water.

5



» Insert the cover and pour uri**LOCK** over the cover.



# Cleaning and Maintenance. Fast, Simple & Effective.

## 1 Daily Cleaning

Spray on **uriCLEAN** and polish with uricloth.



Daily  
**30 sec.**



## 2 Refilling

Pour 0,3l **uriLOCK** directly over the cover every 1-3 months.



every 1-3 months  
**10 sec.**



## 3 Maintenance

Rinse with **uriSTRONG** 3 to 6 times yearly.



3 to 6 times yearly  
**15 min.**





uridan waterless solutions GmbH  
Sandfeld 5, A-2100 Stetten  
[uridan.com](http://uridan.com)

Head Office  
+43 660 635 54 17  
[contact@uridan.com](mailto:contact@uridan.com)